

Global Fuelling Systems (Pty.) Ltd.

Reg number: 2004/009943/07

P.O. Box 239, Tableview, Cape Town 7439
Tel: +27 21 552 8375 Fax: +27 21 551 9183
Esso Rd, Montague Gardens, Cape Town
E-mail: louis martin@mweb.co.za



P.O. Box 13759, Northmead, Benoni 1511
Tel: +27 11 457 8500 Fax: +27 11 457 8518
251 Albert Amon Rd, Millennium Business Park, Germiston, 1401
E-mail: sergiob@telkomsa.net

GFS

COMPANY PROFILE

JANUARY 2007

(Updated 12 January 2007)

TABLE OF CONTENTS

1	INTRODUCTION	2
2	LOCATION & FACILITIES	2
2.1	Johannesburg	2
2.2	Cape Town	2
3	COMPANY STRUCTURE	2
3.1	Senior Management	2
<i>3.1.1</i>	<i>Engineering</i>	<i>2</i>
<i>3.1.2</i>	<i>Construction</i>	<i>3</i>
3.2	Technology Partners	3
<i>3.2.1</i>	<i>ColVic Marketing & Engineering</i>	<i>3</i>
<i>3.2.2</i>	<i>Tseba Tanks</i>	<i>3</i>
<i>3.2.3</i>	<i>Petrologic</i>	<i>3</i>
<i>3.2.4</i>	<i>Innovative Petroleum Products</i>	<i>3</i>
4	SERVICES & CAPABILITIES	4
4.1	Engineering & Design	4
4.2	Procurement & Construction Management	4
4.3	Pump & Tank Installation	4
4.4	Fire Prevention & Protection	5
4.5	Lump Sum Turnkey Projects	5
5	SOCIAL AND ENVIRONMENTAL RESPONSIBILITY	5
6	RECENT PROJECTS	6
6.1	Engineering & Design	6
6.2	Procurement & Construction Management	8
6.3	Pump & Tank Installation	8
6.4	Fire Prevention & Protection	10
6.5	Lump Sum Turnkey Projects	11
7	CONTACT DETAILS	13

-----00000-----

1 INTRODUCTION

Global Fuelling Systems (GFS) is a young, dynamic company which primarily services the petroleum distribution sector. GFS is able to provide all the services required in the development, engineering and construction of fuel storage and distribution systems.

GFS was founded in 2004 by a team of people with vast experience in the petroleum construction industry. Since then GFS has successfully completed many challenging projects and has developed an infrastructure which allows us to tackle increasingly complex projects.

2 LOCATION & FACILITIES

GFS operates from offices in Johannesburg and Cape Town and is able to undertake projects country-wide as well as outside our borders. The GFS staff is particularly experienced in working outside of South Africa, often in extremely challenging environments.

2.1 Johannesburg

The GFS administrative office is located in Meadowdale, Johannesburg. Most of the engineering and procurement is performed by the Johannesburg office.

2.2 Cape Town

The core construction team is located in Montague Gardens, Cape Town. The Cape Town construction team is primarily involved in the installation of Pump & Tank facilities for our oil-industry clients in the Western Cape. The Cape Town office is very well equipped for Pump & Tank installation and boasts a fleet of fully tooled vehicles as well as earth-moving equipment.

3 COMPANY STRUCTURE

3.1 Senior Management

3.1.1 Engineering

The Engineering Division is managed by Sergio Burelli (Pr. Eng.).

Sergio holds the following formal qualifications:

BSc. Eng. (Chemical), Wits, 1996

MSc. Eng. (Chemical), Wits, 2002 (with distinction)

GDE (Industrial - Engineering Management), Wits, 2004

Sergio has more than 10 years experience in the hydrometallurgical and petroleum industry. His experience ranges from research & development, feasibility studies & cost estimates, detailed engineering, procurement & construction management, commissioning and production. Sergio is registered as a Professional Engineer with the Engineering Council of South Africa (ECSA reg. no. 20000192) and an active member of the South African Institute of Chemical Engineers (SAIChE).

3.1.2 Construction

The Construction Division is managed by Louis Martin.

Louis holds the following formal qualifications:

- Qualified Pipe Fitter (Chamdor, 1994)
- Qualified Fitter and Turner (Chamdor, 1996)
- Qualified Coded Welder (IIS)

Louis Martin has more than 13 years experience in the petroleum Pump & Tank industry. Louis started his career in the Pump & Tank industry as a site supervisor responsible for the installation of fuel storage tanks (aboveground and underground) and has considerable experience in the installation of various specialised fuel piping systems including Petroplas, UPP, Conley, and steel. He is also very experienced in the installation and construction of electrical, structural and civil works associated with the Pump & Tank industry. He was also responsible for the establishment of the underground storage tank manufacturing facility with our technology partners. Louis has been involved with the training of new pump and tank contractors for the major petroleum companies in Africa and has supervised many installations outside the South African borders.

3.2 Technology Partners

Our technology partners are all specialist suppliers of equipment and materials to the petroleum industry. Our partnership with them allows us to source quality equipment and materials at very competitive prices for our clients.

3.2.1 ColVic Marketing & Engineering

GFS shares premises with ColVic Marketing & Engineering in Johannesburg and Cape Town. ColVic is the principal source of piping, fittings, secondary containment and fuelling equipment for GFS projects. ColVic supplies the revolutionary Petroplas fluorinated HDPE piping system, which GFS uses for many of its underground piping installations.

3.2.2 Tseba Tanks

Tseba Tanks manufactures petroleum storage tanks to SABS standards and is the principal supplier of both aboveground and underground storage tanks for GFS projects.

3.2.3 Petrologic

Petrologic manufactures and supplies fuel pumps, dispensers, meters and forecourt management systems for GFS projects.

3.2.4 Innovative Petroleum Products

Innovative Petroleum Products (IPP) is our USA based technology partner. Through IPP we ensure that we are always current with the latest technology provided by the US market. IPP is the principal supplier of electronic tank managements systems for GFS projects.

4 SERVICES & CAPABILITIES

GFS is able to contribute to a petroleum storage & distribution project at any stage of the project's development, from conceptualisation to final commissioning.

4.1 Engineering & Design

Engineering & Design services and capabilities offered by GFS include:

- Fuel storage and distribution system engineering & design:
 - Site surveys
 - Process & systems engineering
 - Mechanical engineering
 - Civil & Structural engineering
 - Electrical engineering
 - Piping engineering
 - Quantity surveying & cost estimating
 - System layouts
 - Submission of plans to councils
- Testing of existing equipment (underground storage tanks, pipelines).
- Development of Storage Tank Management Plans.
- HAZOPS (Hazard & Operability Studies).

GFS engineers and designers have in-depth understanding of local and international standards. Final designs are approved by a Professional Engineer before being issued for approval and construction.

4.2 Procurement & Construction Management

Through its technology partners, GFS has access to the best and most cost-effective technology used in the petroleum distribution sector. This enables GFS to procure the highest quality equipment and materials for our clients at very competitive prices.

Often clients of our technology suppliers require their sub-contractors to be supervised by people with expert knowledge of the installation of the equipment and/or piping systems. GFS offers a construction management services through which sub-contractors are managed and supervised to ensure that installation procedures are followed and that equipment is installed according to the manufacturer's specifications.

4.3 Pump & Tank Installation

The Cape Town office is primarily involved in the installation of Pump & Tank facilities at retail service stations in the Western Cape. The Cape Town group consists of three complete Pump & Tank installation teams, each with a fully equipped vehicle. Earth-moving equipment for the installation of tanks is shared between the three teams as required.

The Pump & Tank installation crews have many years experience and are familiar with the installation of all forecourt piping and pumping arrangements.

4.4 Fire Prevention & Protection

All petroleum installations require fire detection and suppression, the design of which is most effectively achieved when engineered by people who understand the primary process.

GFS employs a fire specialist with vast experience in this field. The fire specialist assists the GFS engineers and construction teams to ensure that the fire protection system designed and installed for each fuel facility is fit for purpose.

4.5 Lump Sum Turnkey Projects

GFS is able to combine its skills and experience in the engineering, procurement and construction of fuel systems to offer our clients turnkey solutions to their fuelling problems.

GFS has the necessary expertise to develop a project in its entirety from conceptualisation through to final commissioning.

5 SOCIAL AND ENVIRONMENTAL RESPONSIBILITY

GFS is committed to conducting its business in a safe, socially and environmentally responsible manner. GFS is an equal opportunities employer and does not discriminate on the basis of race or gender.

Engineering is performed to international standards and final designs are approved by a Professional Engineer.

GFS construction crews are fully trained and equipped with safety gear as required by the Occupational Health and Safety Act as a minimum. GFS strives to exceed and improve on the minimum requirements.

6 RECENT PROJECTS

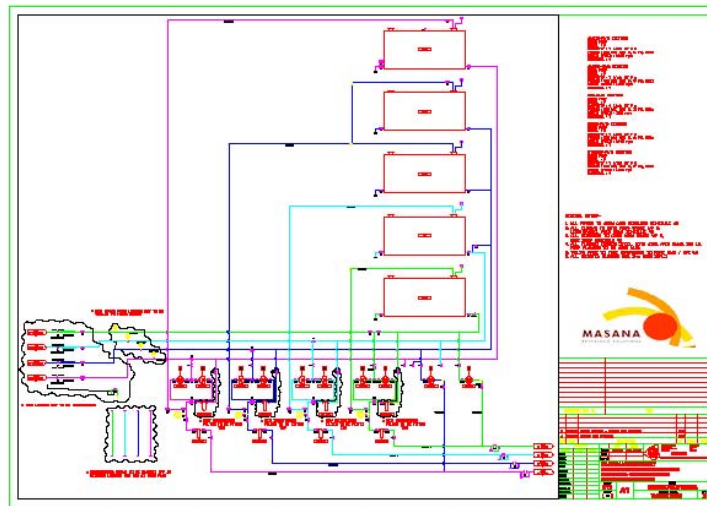
6.1 Engineering & Design

Pipeline Replacment Project for BP Masana (through Ummebele Management Consulatnts) – Palabora Mining Company, Palaborwa.

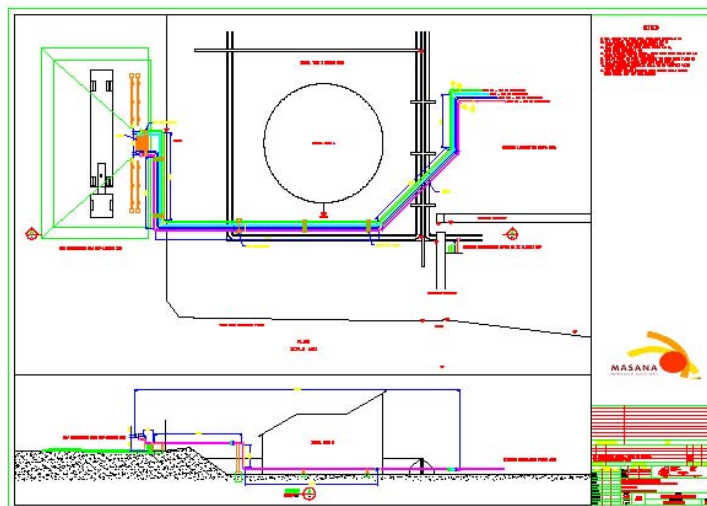
GFS Project Value: R 200k

The client wished to replace the existing diesel fuel and lubrication oils decanting facilities. GFS was requested to design a new diesel offloading bay including pumps, filters, piping and pipe gantry from the rail siding to the bulk storage tank farm. The client also requested a design for a new lubrication oils offloading bay from which oils could be off loaded from tanker trucks to the bulk storage tank farm.

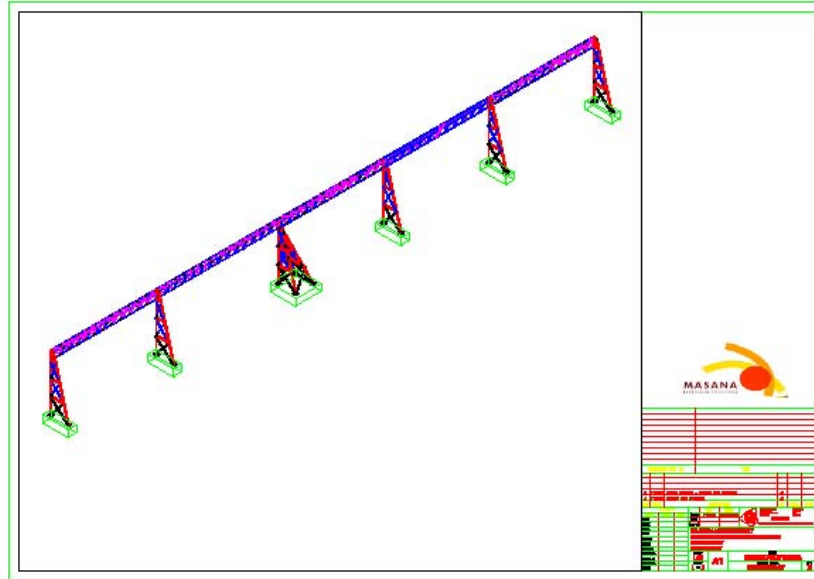
Lubrication oils system Piping & Instrumentation Diagram (P&ID):



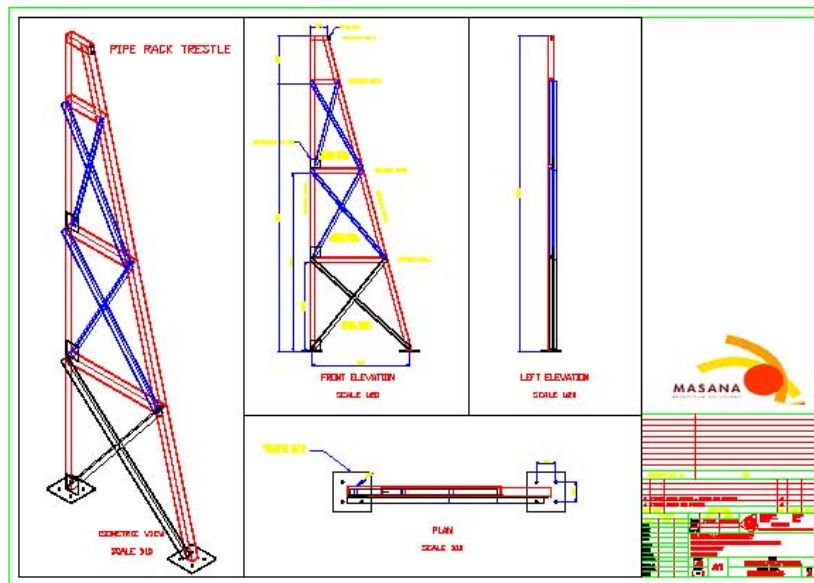
New off-loading bay and piping layout design:



3D CAD Model of the new Pipe Gantry:



Design details of the pipe gantry steel support trestle:



6.2 Procurement & Construction Management

Temporary Pipeline Installation for Chevron Texaco at Pescanova – Luderitz, Namibia.

The client supplies diesel fuel to the local fishing industry in Luderitz. The existing steel diesel pipeline supplying fuel from the bulk storage tanks to the fishing boats at the Pescanova jetty needed to be extended to accommodate changes made to the jetty. GFS was requested to supervise, manage and assist the local contractor with the installation of a temporary secondary-contained Petroplas line.

Engen Tanesco Service Station conversion from suction to pressure site – Dar es Salaam, Tanzania.

The client wanted to change the service station site from a suction system to a pressure dispensing system. This required the removal of the existing suction pumps and replacing them with submersible turbine pumps and dispensers. As a consequence the existing piping configuration also had to be changed. GFS was requested to provide construction management and assistance. A GFS site supervisor was sent to the construction site to assist and supervise the local contractor for the duration of the entire change-over.

6.3 Pump & Tank Installation

In the past year GFS has performed in excess of R1M of Pump & Tank installation work, mainly in the Western Cape. These projects have been executed for various clients, including major oil companies such as Shell and BP.

Installation of secondary contained Petroplas piping from underground storage tanks to forecourt dispensers:



Excavating the pit for an underground fuel storage tank:



Rigging an underground storage tank into the pit:



Backfilling around an underground storage tank with selected material:



6.4 Fire Prevention & Protection

Winkelhaak Verspreiders Biodiesel Production Facility – Standerton.

GFS Project Value: R 500k

The client requested a fire protection system for their biodiesel production facility. GFS designed and supplied a foam sprinkler and hydrant system to protect the biodiesel plant in the event of the fire. The system is fully automated and is controlled by a programmable logic controller.

Fire water booster pumps, foam induction pumps and foam tank:



Overhead foam sprinkler system over the biodiesel production and storage tanks:



6.5 Lump Sum Turnkey Projects

Labriz Island Resort: Fuel Storage & Distribution System – Silhouette Island, Seychelles.

GFS Project Value: R 1 500k

The client requested a complete solution for the island resort’s fuel requirements. Electricity on the island is generated by diesel-powered generator sets which consume considerable quantities of fuel. Diesel fuel is delivered by ship to the island and is off-loaded for storage in a bulk tank farm. Fuel is distributed to the generators and other users on the island from the tank farm. A 1000m of pipe was installed to transport the fuel from the tank farm to the generator facility. A new 40kL diesel tank was installed together with the client’s refurbished 50kL tank. Allowance was made to install two additional 40kL tanks at a later stage. The 40kL tanks are designed to fit into a 12m container, allowing them to be containerised for transport purposes.

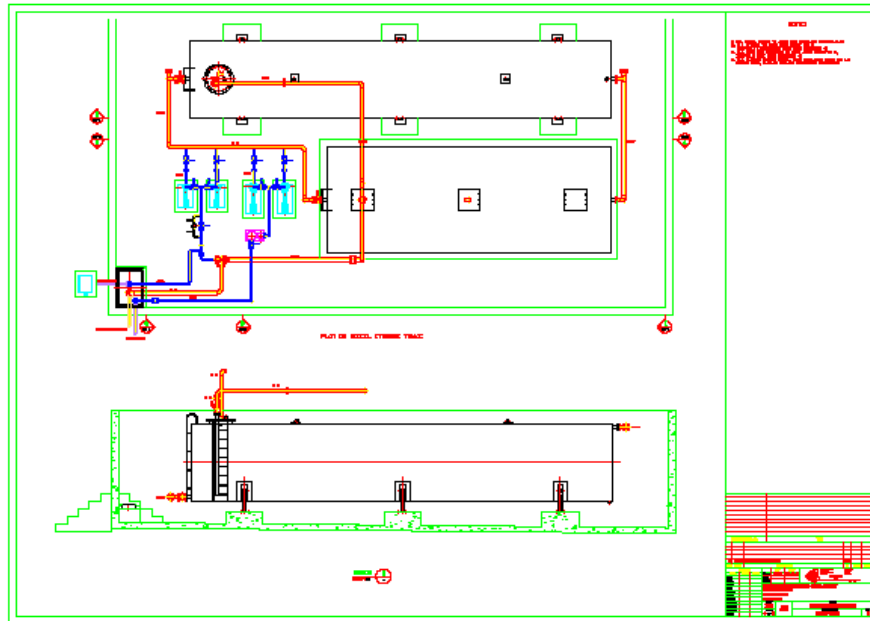
Distribution pumps during installation:



Jetty fuel receiving and dispensing point during installation:



Storage tanks, pumps and piping layout design:



Storage tanks installed as per design:



7 CONTACT DETAILS

Johannesburg Office:

Sergio Burelli
Tel. +27 (011) 457 8500
Fax +27 (011) 457 8518
Mobile +27 (082) 972 2823
E-mail SergioB@telkomsa.net

Cape Town Office:

Louis Martin
Tel. +27 (021) 552 8375
Fax +27 (021) 551 9183
Mobile +27 (082) 854 6621
E-mail louismartin@mweb.co.za

End of Document
-----00000-----